

Waste Management in Edinburgh

Nicolle, Asa, Rafal, and Erin

B140608, B121497, B137692, B146632

Current Situation



Public Opinion

▶ The Meadows Share

...Please spread the not very exciting word that if bins are full, to please find another one. We have to wake up to this. Thanks.



6

▶ The Meadows Share

...I also asked for better labelling on the bins to make it clear what each are used for. We have a large student, international student and tourist population in the area and if you aren't from here it i...



45



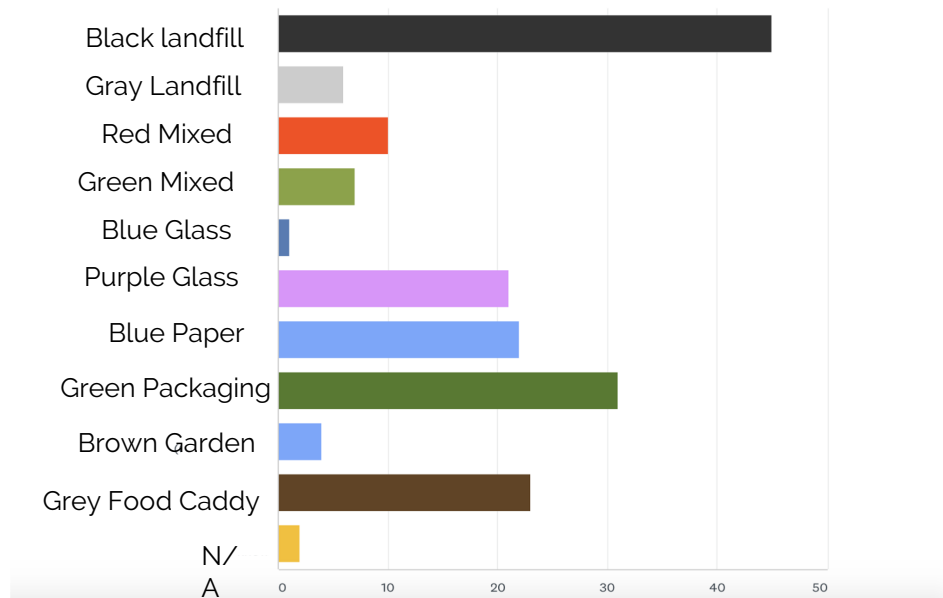
nts



13 Comments

Survey Says

What kind of bins do you have in your neighborhood?



Survey Results (cont.)

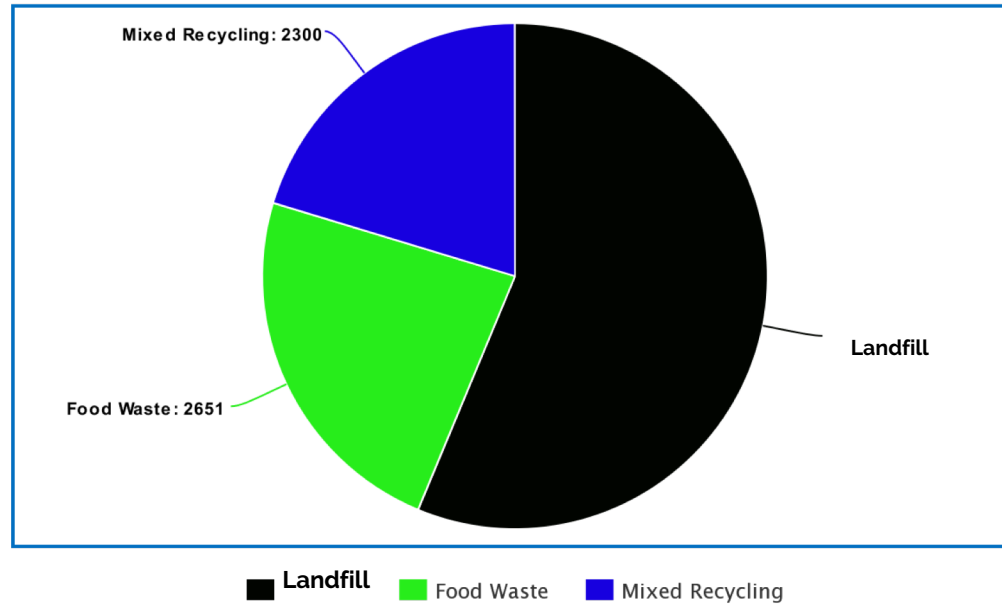
- “I live in a busy area of flats but there are only landfill bins on my street. I have to go three streets away to recycle.”
- “It’s awful. My neighborhood only reliably has landfill bins. The other ones move about and are often full, and I’ve never see a glass, mixed or food waste bin. I often put my glass in the bin of a nearby restaurant.”
- “I don’t know where any of our bins are.”

Bin Design at Present

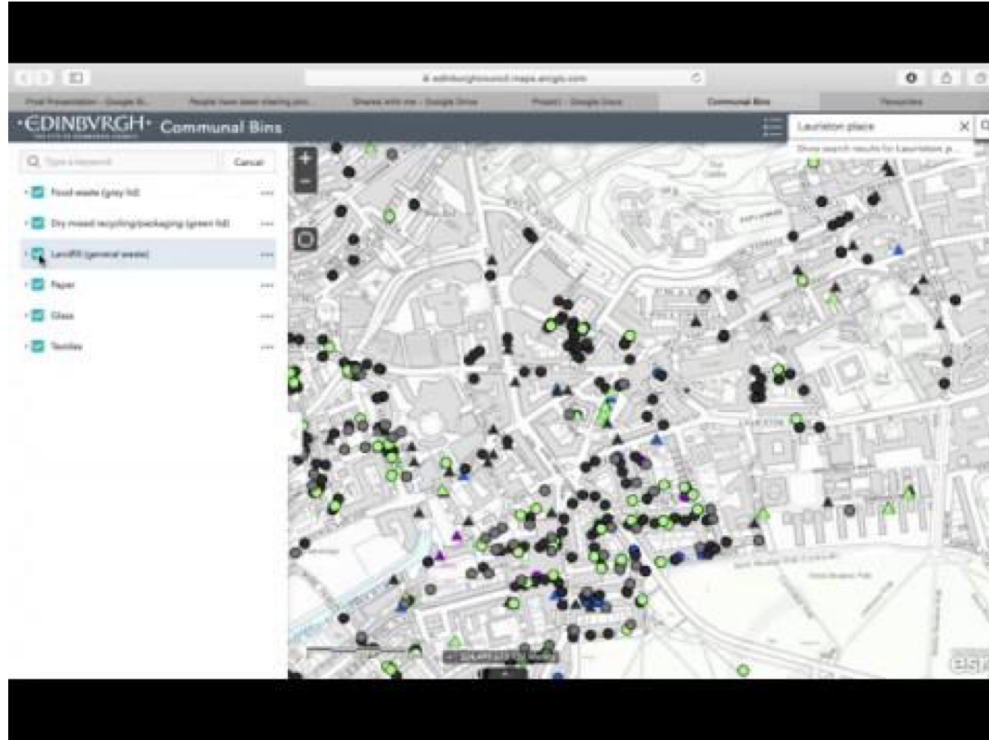


Distribution in the city

Bin Distribution



Distribution (cont.)



Consultation with the City Council

EM

Erica Manfroi <Erica.Manfroi@edinburgh.gov.uk>



Tue 19/03/2019 12:26

MODRZEWSKI Rafal; Karen Reeves <Karen.Reeves@edinburgh.gov.uk> ∨



CEC Recycling Consultation_R...
2 MB

Dear Mr Modrzewski,

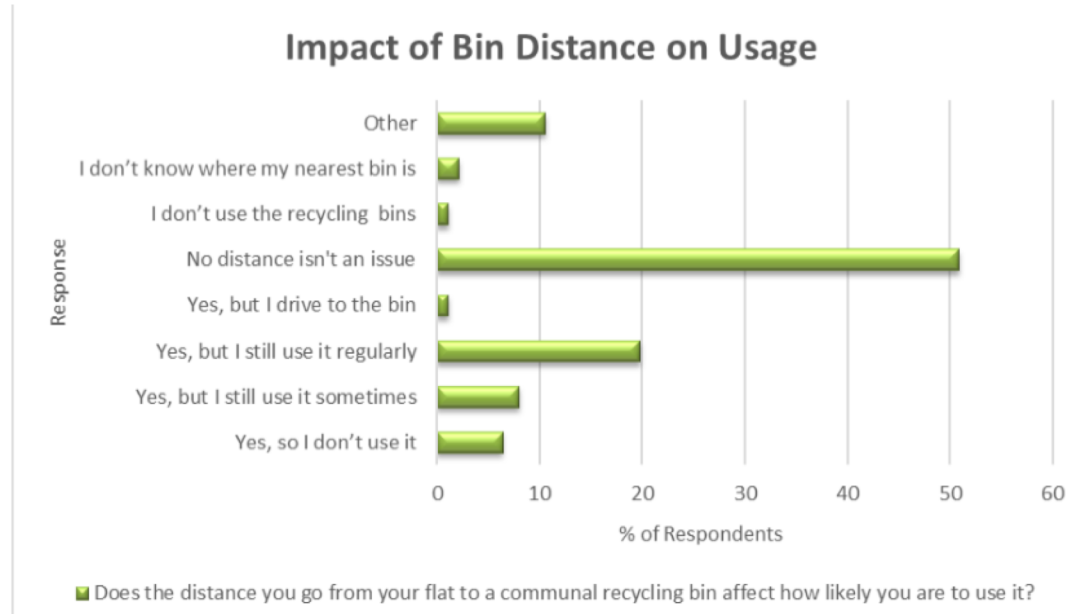
Thank you for your email.

Following some information that should answer your questions.

“Review the existing bin locations to develop more formalised collection [...]”

“Increase and improve recycling services to residents [...]”

Comparison to Changeworks Data



Changeworks survey



- “There is public desire for more recycling bins to be installed in their area”
- “Food waste recycling was the least recycled material [...]”
- “More and improved signage using images and pictures would encourage more recycling”

Bin Aesthetics

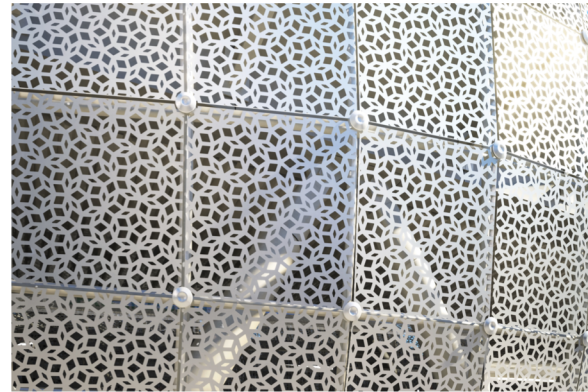


São Paulo



Lagos

Pattern Inspiration



Sidewalk Bin Proposal



Communal Bins

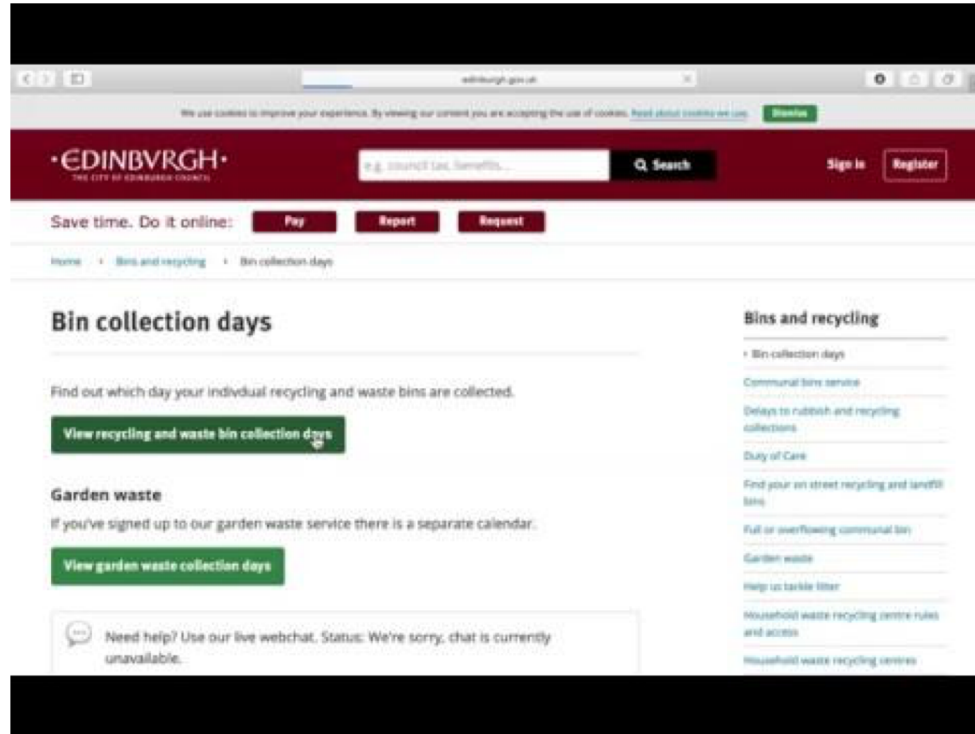


Mixed Recycling



Small Electricals

Current Information



The screenshot shows the Edinburgh City Council website. At the top, there is a dark red header with the council's name and logo. Below the header, there is a navigation bar with buttons for 'Pay', 'Report', and 'Request'. The main content area is titled 'Bin collection days' and includes a search bar, a 'Sign in' button, and a 'Register' button. The page content is organized into sections: 'Bin collection days', 'Garden waste', and 'Bins and recycling'. The 'Bin collection days' section includes a green button labeled 'View recycling and waste bin collection days'. The 'Garden waste' section includes a green button labeled 'View garden waste collection days'. The 'Bins and recycling' section includes a list of links: 'Bin collection days', 'Communal bins service', 'Delays to rubbish and recycling collections', 'Duty of Care', 'Find your on street recycling and landfill bins', 'Full or overflowing communal bin', 'Garden waste', 'Help us tackle litter', 'Household waste recycling centre rules and access', and 'Household waste recycling centres'. A chatbot window is visible at the bottom left, indicating that the live webchat is currently unavailable.

Edinburgh.gov.uk

We use cookies to improve your experience. By viewing our content you are accepting the use of cookies. [Read about cookies we use](#) [Decline](#)

• EDINBURGH •
THE CITY OF EDINBURGH COUNCIL

Search

Sign in Register

Save time. Do it online: [Pay](#) [Report](#) [Request](#)

Home • [Bins and recycling](#) • [Bin collection days](#)

Bin collection days

Find out which day your individual recycling and waste bins are collected.

[View recycling and waste bin collection days](#)

Garden waste

If you've signed up to our garden waste service there is a separate calendar.

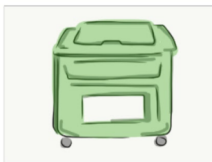
[View garden waste collection days](#)

Need help? Use our live webchat. Status: We're sorry, that is currently unavailable.

Bins and recycling

- [Bin collection days](#)
- [Communal bins service](#)
- [Delays to rubbish and recycling collections](#)
- [Duty of Care](#)
- [Find your on street recycling and landfill bins](#)
- [Full or overflowing communal bin](#)
- [Garden waste](#)
- [Help us tackle litter](#)
- [Household waste recycling centre rules and access](#)
- [Household waste recycling centres](#)

WHICH BIN ?



Food Waste

- Cooked and Uncooked food (bagged)
- Meat and bones, eggs and egg shells
- Tea Bags and Coffee Grounds

Collected Monday and Friday



Mixed Recycling

- Cardboard
- Clean plastic bottles, tubs, trays
- Clean cans and tins
- Drink cartons
- Foil and Empty Aerosols
- Papers

Collected Tuesday and Thursday



- Clean glass bottles (all colors)
- Clean glass jars (all colors)

Glass Recycling

Collected Tuesday and Thursday



Only put items you can't recycle in this bin. Do not leave bags on the street

Landfill Waste

Collected Monday and Friday



Paper Recycling

- Newspapers and Magazines
- Envelopes and mail
- Printed and Shredded Paper
- Other white paper

Collected Tuesday and Thursday



Conclusion

- Problem: scattered, overflowing, & lack of information
- Solution: distribution & information (laminated & pamphlets)
- Next steps: placement, politics, and economics
 - City Council goal: by 2025 70% of waste gets recycled
 - City Council improving the system at “costs contained within existing resources”
- Improve recycling & reduce frustrations

Acknowledgements

- James and Morgan
- Change Works
- The City Council
- Focus Group
- Participatory Design contributors
- Anton Puzorjov & One Cherry
- Sampsa Hyysalo
- Alan Peddie
- Aileen Boyle
- Chris Hellowell
- All of y'all